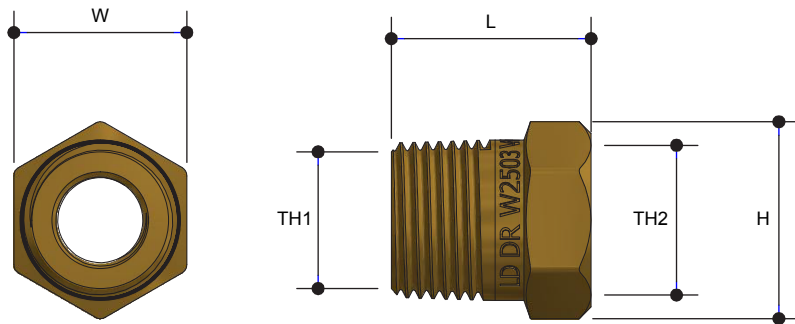


SCREWED BRASSWARE

Bush Reducing

Product Specifications



Specifications

Maximum working temperature 1°C to 60°C

Maximum pressure rating 1600kPa

Sizing Chart (MM)

	L	H	W	TH1	TH2
AW327	14	16	14	R 1/4"	Rp 1/8"
AW328	21	20	18	R 3/8"	Rp 1/8"
AW329	21	20	18	R 3/8"	Rp 1/4"
AW330	21	25	22	R 1/2"	Rp 1/8"
AW331	20	25	22	R 1/2"	Rp 1/4"
AW332	20	23	22	R 1/2"	Rp 3/8"
AW332C*	20	23	22	R 1/2"	Rp 3/8"
AW338	22	31	27	R 3/4"	Rp 1/8"
AW339	22	31	27	R 3/4"	Rp 1/4"
AW336	22	31	27	R 3/4"	Rp 1/2"
AW336NB	22	31	27	R 3/4"	Rp 1/2"
AW337*	22	31	27	R 3/4"	Rp 1/2"
AW341	24	34	36	R 3/4"	Rp 1/2"
AW342	24	38	34	R 1"	Rp 3/4"
AW343	32	46	43	R 1 1/4"	Rp 1/2"

* Chrome Plated

Features



Watermark approved

DR Brass

Tested and certified to AS 3688

	L	H	W	TH1	TH2
AW344	30	48	43	R 1 1/4"	Rp 3/4"
AW345	22	31	27	R 1 1/4"	Rp 1"
AW347	27	52	49	R 1 1/2"	Rp 3/4"
AW348	32	52	49	R 1 1/2"	Rp 1"
AW349	32	52	49	R 1 1/2"	Rp 1 1/4"
AW352	32	65	61	R 2"	Rp 3/4"
AW353	36	66	61	R 2"	Rp 1"
AW354	33	65	60	R 2"	Rp 1 1/4"
AW355	36	65	61	R 2"	Rp 1 1/2"
AW356	43	97	90	R 3"	Rp 2 1/2"
AW357	48	120	114	R 4"	Rp 2"
AW358	48	120	114	R 4"	Rp 2 1/2"
AW359	48	120	114	R 4"	Rp 3"

For more information on Metforge, contact:

Austworld 15 Activity Crescent, Molendinar, Queensland 4214 Australia

P. 1300 780 430

F. 1300 780 441

E. info@austworld.com.au

Austworld Pty Ltd. All rights reserved 2018. Austworld and Metforge are registered trade mark belonging to Austworld Pty Ltd.

