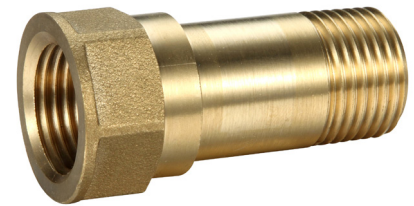
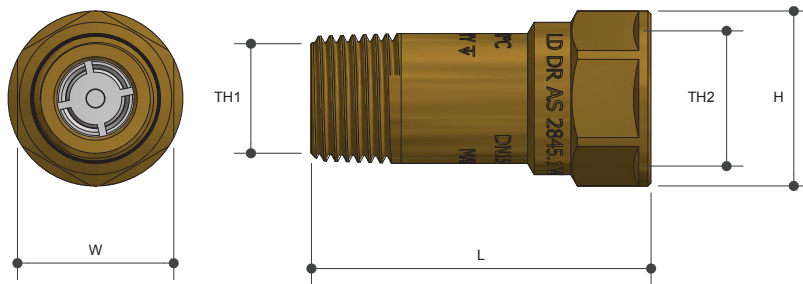


# MINI DUAL CHECK VALVE

MI X FI

Product Specifications



## Specifications

Maximum working temperature 60°C

Peak temperature 110°C

Maximum working pressure 1200 kPa

## Sizing Chart (MM)

	L	H	W	TH1	TH2
MDOV15	55	28	26	R 1/2"	Rp 1/2"
MDOV20	58	31	33	R 3/4"	Rp 3/4"

## Features

Watermark approved

DR Brass

Compact design

Protects against back flow and back siphonage

Suitable for vertical and horizontal installations

100% factory tested for sealing operation

Tested and certified to AS/NZS 2845.1



## Material Chart

Part	Material
Body	DR Brass
Check Valve	POM
Sure Clip	Stainless Steel
Spring	Stainless Steel
O Ring	EPDM

For more information on Logi Valve, contact:  
Austworld 15 Activity Crescent, Molendinar, Queensland 4214 Australia  
P. 1300 780 430 F. 1300 780 441 E. info@austworld.com.au

Austworld Pty Ltd. All rights reserved 2018. Austworld and Logi Valve are registered trade mark belonging to Austworld Pty Ltd.

